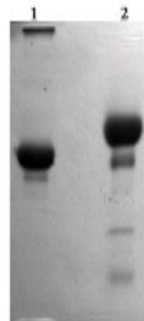


## ALB

### Native Canine Plasma Albumin

<b>Catalog No.</b>	CS212A CS212B	<b>Quantity:</b>	100 mg 200 mg
<b>Alternate Names:</b>	CSA		
<b>Description:</b>	Albumin is a water-soluble protein with considerable structural stability which makes up 60 percent of the total protein of plasma. It functions as a carrier of hormones, enzymes, fatty acids, metal ions, and medicinal products. Prepared from US origin dog (canine) plasma by proprietary fractionation methods and lyophilized.		
<b>UniProt ID:</b>	P49822		
<b>Gene ID:</b>	403550		
<b>Source:</b>	Dog plasma		
<b>Molecular Weight:</b>	66 kDa		
<b>Formulation:</b>	Lyophilized		
<b>Purity:</b>	>95% by SDS-PAGE analysis		
<b>Concentration:</b>	≥ 1.0 mg/ml, lot specific		
<b>Extinction Coefficient:</b>	$E^{0.1\%}_{280\text{nm}} = 0.67$		
<b>Reconstitution:</b>	Add deionized water or buffer to original volume of > 0.1 mg/ml, aliquot and freeze unused portion.		
<b>Storage &amp; Stability:</b>	Store at -80°C for up to 1 year. Upon reconstitution, prepare working aliquots and store at -80°C. <b>Avoid repeated freeze-thaw cycles.</b>		



1. Dog Albumin (10 ug) NR  
2. Dog Albumin (10 ug) R

NOT FOR HUMAN USE. FOR RESEARCH ONLY. NOT FOR DIAGNOSTIC OR THERAPEUTIC USE.



**Cell Sciences®**  
65 Parker Street  
Unit 11  
Newburyport, MA 01950

Toll Free: 888-769-1246  
Phone: 978-572-1070  
Fax: 978-992-0298

E-mail: [info@cellsciences.com](mailto:info@cellsciences.com)  
Website: [www.cellsciences.com](http://www.cellsciences.com)