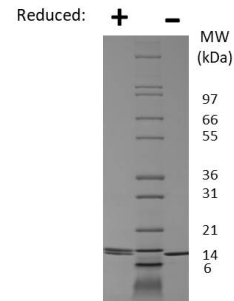
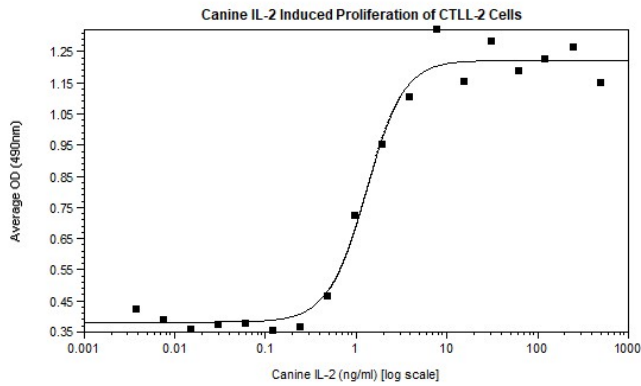


## IL2

### Canine Interleukin 2

<b>Catalog No.</b>	CS800A CS800B CS800C	<b>Quantity:</b>	5 µg 25 µg 1.0 mg
<b>Alternate Names:</b>	IL-2, T cell growth factor, TCGF, Aldesleukin		
<b>Description:</b>	Interleukin 2 (IL-2) is an immunomodulatory cytokine that is produced by lymphocytes. IL-2 signals through the IL-2R receptor to induce activated T cell proliferation and promote T cell differentiation. IL-2 also stimulates the proliferation and differentiation of B cells, natural killer cells, monocytes, and macrophages.		
<b>UniProt ID:</b>	Q29416		
<b>Gene ID:</b>	403989		
<b>Source:</b>	<i>E.coli</i>		
<b>Formulation:</b>	Lyophilized from a sterile (0.2 micron) filtered aqueous solution containing 20 mM sodium bicarbonate, pH 8.5		
<b>Molecular Weight:</b>	15.6 kDa (136 aa) monomer		
<b>Endotoxin:</b>	≤ 1 EUs/µg by Kinetic LAL		
<b>Purity:</b>	≤ 1 EUs/µg by reducing and non-reducing SDS-PAGE		
<b>Biological Activity:</b>	ED <sub>50</sub> ≤ 5 ng/mL determined by CTLL-2 cell proliferation.		
<b>Specific Activity:</b>	2.0 x 10 <sup>5</sup> units/mg		
<b>Reconstitution:</b>	<b>Centrifuge vial before opening.</b> Add sterile 10 mM sodium bicarbonate, pH 8.5 at 0.1 mg/ml. Suspend the product by gently pipetting the above recommended solution down the sides of the vial. <b>DO NOT VORTEX.</b> Allow several minutes for complete reconstitution. For prolonged storage, dilute to working aliquots in a 0.1% BSA solution, store at -80°C and avoid repeat freeze thaws.		
<b>Amino Acid Sequence:</b>	MAPITSSSTK ETEQQMEQLL LDLQLLLNGV NNYENPQLSR MLTFKFYTPK KATEFTHLQC LAEELKNLEE VLGLPQSKNV HLTDTKELIS NMNVTLKLLK GSETSYNCEY DDETATITEF LNKWITFSQS IFSTLT		
<b>Storage &amp; Stability:</b>	Lyophilized product is stable at room temperature for shipping purposes. Upon receipt, store at -20°C to -80°C for up to 1 year. Upon reconstitution, the preparation is stable for up to one month at 2-8°C. For long term storage, prepare working aliquots and store at -20 to -80°C. For maximal stability, dilute to working aliquots in a 0.1% BSA solution. <b>Avoid repeated freeze-thaw cycles.</b>		





#### Canine IL-2 Gel

Figure: 1 ug run under (-) non-reducing conditions and (+) reducing conditions in a 4-20% Tris-Glycine gel, stained with Coomassie Blue. Canine IL-2 is predicted to have a MW of 15.6 kDa.

**NOT FOR HUMAN USE. FOR RESEARCH ONLY. NOT FOR DIAGNOSTIC OR THERAPEUTIC USE.**



**Cell Sciences®**  
65 Parker Street  
Unit 11  
Newburyport, MA 01950

Toll Free: 888-769-1246  
Phone: 978-572-1070  
Fax: 978-992-0298

E-mail: [info@cellsciences.com](mailto:info@cellsciences.com)  
Website: [www.cellsciences.com](http://www.cellsciences.com)