

IL4 Canine IL-4

| | | | |
|--------------------|--------|------------------|--------|
| Catalog No. | CS803A | Quantity: | 25 µg |
| | CS803B | | 100 µg |
| | CS803C | | 1 mg |

Alternate Names: Interleukin-4, B-cell stimulatory factor-1, BSF-1, BCDF, BCGF

Description: Interleukin 4 (IL-4) is an immunomodulatory cytokine that functions to induce naïve helper T cells to differentiate into type 2 T helper (Th2) cells. Th2 cells subsequently produce more IL-4 in a positive feedback loop. IL-4 also promotes immunoglobulin IgG to IgE isotype switching on B cells. IL-4 binds the IL-4Rα receptor to activate STAT6 signaling.

GeneID: 403785

UniProt ID:: O77762

Source: *E.coli*

Molecular Weight: 12.9 kDa (109 aa) monomer

Formulation: Lyophilized from a sterile (0.2 micron) filtered aqueous solution containing 0.1% Trifluoroacetic Acid (TFA)

Purity: ≥ 95% by reducing and non-reducing SDS-PAGE

Endotoxin Level: ≤ 1 EU/µg by kinetic LAL

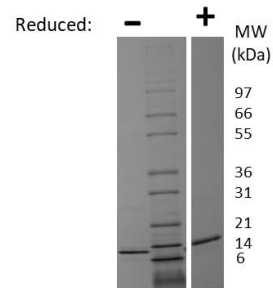
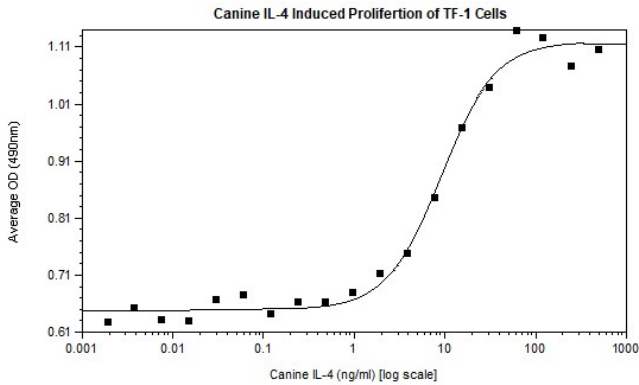
Biological Activity: ED₅₀ ≤ 25 ng/ml determined by TF-1 cell proliferation.

Specific Activity: ≥ 4.0 x 10⁴ units/mg

Amino Acid Sequence: MHNFNITIKE IIKMLNILTA RNDSCMELTV KDVFTAPKNT SDKEIFCRAA TVLRQIYTHN CSNRYLRGLY RNLSSMANKT CSMNEIKKST LKDFLERLKV IMQKKYYRH

Reconstitution: **Centrifuge the vial prior to opening.** Reconstitute with sterile water at 0.1 mg/ml by gently pipetting to wash down the sides of the vial to ensure full recovery of the protein into solution. **Do not vortex.** Further dilution should be made into a solution containing a carrier protein such as 0.1% BSA.

Storage & Stability: Lyophilized product is stable at room temperature for shipping purposes. Upon receipt, store at -20°C to -80°C for up to 1 year. Upon reconstitution, the preparation is stable for up to one month at 2-8°C. For long term storage, prepare working aliquots and store at -20 to -80°C. For maximal stability, dilute to working aliquots in a 0.1% BSA solution. **Avoid repeated freeze-thaw cycles.**



Canine IL-4 Gel

Figure: 1 ug run under (-) non-reducing conditions and (+) reducing conditions in a 4-20% Tris-Glycine gel, stained with Coomassie Blue. Canine IL-4 is predicted to have a MW of 12.9 kDa.

NOT FOR HUMAN USE. FOR RESEARCH ONLY. NOT FOR DIAGNOSTIC OR THERAPEUTIC USE.



Cell Sciences®
65 Parker Street
Unit 11
Newburyport, MA 01950

Toll Free: 888-769-1246
Phone: 978-572-1070
Fax: 978-992-0298

E-mail: info@cellsciences.com
Website: www.cellsciences.com