

EDNRA

Bovine Endothelin-1 receptor

Catalog No.	CSB1051MP	Quantity:	10 mg
	CSB1051PR		50 µg

Alternate Names: Endothelin A receptor, ET-A, ET-AR

Description: EDNRA encodes the bovine protein Endothelin-1 receptor (ETA), a peptide that plays a role in potent and long-lasting vasoconstriction. The ETA receptor is a member of the endothelin receptor group of G-protein-coupled receptors that also includes ETB. They are located primarily in the vascular smooth muscle where they play a role in vasoconstriction and cell proliferation.

The receptor is available in the following formats: stable over-expression cell line, membrane preparation, or purified receptor in HEK293 or CHO. Various tagged versions are available.

Gene ID: 281749

UniProtKB: P21450

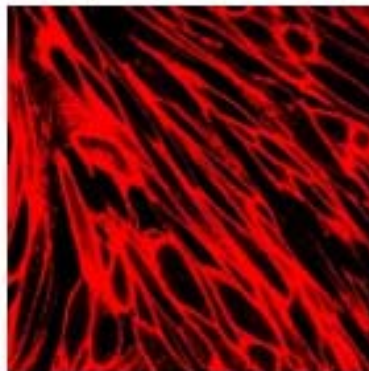
Format: Cell line, membrane preparation, or purified protein

Source: HEK 293 or CHO cells

Characterization: Expression verified by flow cytometry. Receptor demonstrates biological activity when tested in a radioligand assay.

Affinity Tag Options: 4S: 2 x TwinStrep Tag at the amino-terminus

Bovine EDNRA receptor was stably overexpressed in CHO cells and expression was assessed by immunostaining with Strep-Tactin Chromeo 546



NOT FOR HUMAN USE. FOR RESEARCH ONLY. NOT FOR DIAGNOSTIC OR THERAPEUTIC USE.



Cell Sciences®
65 Parker Street
Unit 11
Newburyport, MA 01950

Toll Free: 888-769-1246
Phone: 978-572-1070
Fax: 978-992-0298

E-mail: info@cellsciences.com
Website: www.cellsciences.com