

GLRA1/GLRB Human Glycine Receptor $\alpha 1/\beta$

Catalog No. CSH0110MP **Quantity:** 10 mg
CSH0110PR 50 μ g

Description: Glycine receptors are pentameric ligand-gated chloride channel receptors which mediate post-synaptic inhibition in the central nervous system.

The receptor is available in the following formats: stable over-expression cell line, membrane preparation, or purified receptor in HEK293 or CHO. Various tagged versions are available.

Gene ID: 2741/2743

UniProtKB: P23415/P48617

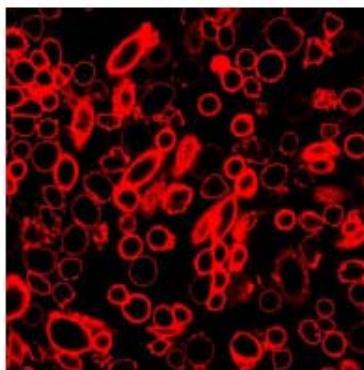
Format: Cell line, membrane preparation, or purified protein

Source: HEK 293 or CHO cells

Characterization: Expression verified by flow cytometry. Receptor demonstrates biological activity when tested in a radioligand assay.

Affinity Tag Options: GLRA1 - FLAG on amino-terminus, FLAG-HIS₁₀ on carboxyterminus
GLRB - TwinStrep Tag at amino-terminus

Immunostaining of HEK293 cells stably overexpressing human glycine receptor $\alpha 1/\beta$ using Strep-Tactin Chromeo 546



NOT FOR HUMAN USE. FOR RESEARCH ONLY. NOT FOR DIAGNOSTIC OR THERAPEUTIC USE.



Cell Sciences[®]
65 Parker Street
Unit 11
Newburyport, MA 01950

Toll Free: 888-769-1246
Phone: 978-572-1070
Fax: 978-992-0298

E-mail: info@cellsciences.com
Website: www.cellsciences.com