

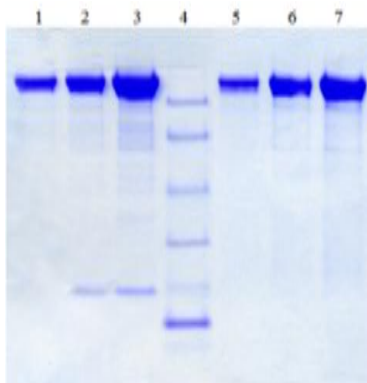
CP

Native Human Ceruloplasmin

Catalog No.	CSI19796A CSI19796B	Quantity:	1.0 mg 5 mg
Alternate Names:	CP-2, ceruloplasmin (ferroxidase)		
Description:	<p>Native Human Ceruloplasmin.</p> <p>CP is a metalloprotein that binds most of the copper in plasma and is involved in the peroxidation of Fe⁺⁺ transferrin to Fe⁺⁺⁺ transferrin. It is an acute-phase reactant. Increased levels are associated with normal pregnancy, rheumatoid arthritis, and cirrhosis. Decreased levels are associated with hepatolenticular degeneration (Wilson's Disease). An elevated level of Cp is found in patients with progressive tumors. Additionally, because Cp is a prooxidant, an elevated level is a sign of cardiovascular disease.</p>		
Gene ID:	1356		
Source:	Human Plasma		
Molecular Weight:	132 kDa		
Formulation:	Lyophilized from a solution of 0.005 M Sodium Phosphate + 0.1 M KCl + 0.005 M EDTA + 0.02 M EACA (ε-aminocaproic acid), pH 6.8.		
Purity:	>95% by SDS-PAGE		
Reconstitution:	Centrifuge vial prior to opening. Add sterile, distilled water to original volume. Aliquot and freeze unused portion.		
Storage & Stability:	Stable at -80°C for 3 years.		
Certification:	Prepared from plasma shown to be non reactive for HbsAG, anti-HCV, anti-HBc, and negative for anti-HIV 1 & 2 by FDA approved tests.		

SDS-PAGE of Native Human Ceruloplasmin

Columns 1-3) 5, 10, & 20 µg, Reduced; 4) MW Markers; 5-7, 5, 10, & 20 µg, Non-reduced.



NOT FOR HUMAN USE. FOR RESEARCH ONLY. NOT FOR DIAGNOSTIC OR THERAPEUTIC USE.

