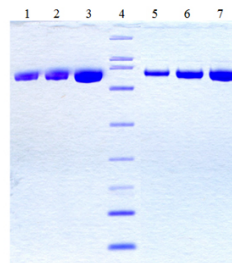


SERPING1

Native Human C-1 Inhibitor, Plasma

Catalog No.	CSI20519A CSI20519B	Quantity:	1.0 mg 5 mg
Alternate Names:	Plasma protease C1 inhibitor, C1Inh. C1 esterase inhibitor, Serpin G1, C1 inhibiting factor		
Description:	A single chain glycoprotein which inhibits C1, C1r, C1s, plasma kallikrein, Factors XIa, XIIa, and plasmin. Present in plasma at 16-33 mg per 100 ml. C1 inhibitor deficiency is a rare condition resulting in facial swelling and abdominal cramping. Usually the condition is hereditary, though it may also occur when the C1EI is non-functional.		
UniProt ID:	P05155		
Gene ID:	710		
Source:	Human plasma		
Molecular Weight:	100 kDa		
Formulation:	0.02M Potassium Phosphate, 0.25M NaCl, pH7.0		
Purity:	>95% by SDS-PAGE analysis		
Concentration:	≥ 1.0 mg/ml, lot specific		
Extinction Coefficient:	$E^{0.1\%}_{280nm} = 0.4$		
Storage & Stability:	Store at -80°C for up to 1 year. Upon initial thaw, prepare working aliquots and store at -80°C. Avoid repeated freeze-thaw cycles.		
Certification:	Prepared from plasma shown to be non reactive for HbsAG, anti-HCV, anti-HBc, and negative for anti-HIV 1 & 2 by FDA approved tests.		



1. Human C-1 Esterase Inhibitor (2.5 ug) R
 2. Human C-1 Esterase Inhibitor (5 ug) R
 3. Human C-1 Esterase Inhibitor (10 ug) R
 4. Molecular Weight Markers
 5. Human C-1 Esterase Inhibitor (2.5 ug) NR
 6. Human C-1 Esterase Inhibitor (5 ug) NR
 7. Human C-1 Esterase Inhibitor (10 ug) NR

NOT FOR HUMAN USE. FOR RESEARCH ONLY. NOT FOR DIAGNOSTIC OR THERAPEUTIC USE.



Cell Sciences®
 65 Parker Street
 Unit 11
 Newburyport, MA 01950

Toll Free: 888-769-1246
 Phone: 978-572-1070
 Fax: 978-992-0298

E-mail: info@cellsciences.com
 Website: www.cellsciences.com