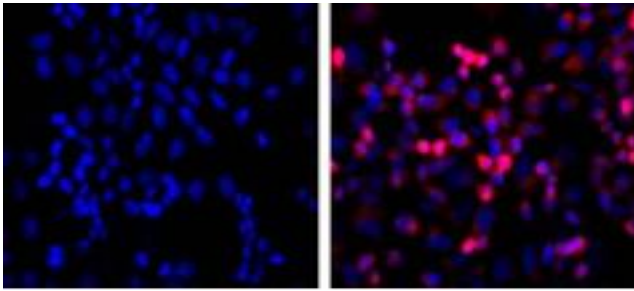


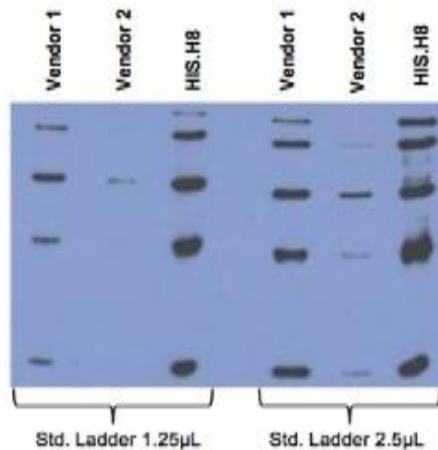
## Mouse Anti-His Tag Clone HIS.H8 mAb

<b>Catalog No.</b>	CSI20563A CSI20563B CSI20563C	<b>Quantity:</b>	50 µg 100 µg 200 µg
<b>Description:</b>	Anti-His Tag Clone HIS.H8 / EH158 mAb		
<b>Concentration:</b>	1.0 mg/ml		
<b>Specificity:</b>	Recognizes the epitope of 6x His-tags encoded by many commercially available vectors, regardless of the tag's location in the fusion protein sequences (i.e.: reacts with N-terminal, C-terminal or internal 6x His-tags)		
<b>Host:</b>	Mouse		
<b>Immunogen:</b>	HHHHHH (6x His) synthetic peptide conjugated to KLH		
<b>Isotype:</b>	IgG2b		
<b>Clone:</b>	HIS.H8 / EH158		
<b>Formulation:</b>	Liquid in 10 mM PBS, pH 7.2, + 0.05% NaN <sub>3</sub> . <b>Precaution:</b> Sodium Azide is a poisonous and hazardous substance which should be handled by trained staff only.		
<b>Purification:</b>	Protein A affinity chromatography from mouse ascites fluid		
<b>Applications:</b>	Dot Blot ELISA Immunoprecipitation Immunostaining Western Blot		
<b>Application Notes:</b>	Western blot sensitivity(with ECL): 1-2 ng of His-tagged fusion proteins Wesern Blot (with ECL): working dilution of 1:1,000-3,000 (incubate for one hour at room temperature). Immunostaining: working dilution of 1:500-2,000. The optimal concentration should be determined by the user for each specific application.		
<b>Storage &amp; Stability:</b>	Store at -20°C for up to 2 years. Centrifuge after first thaw to maximize product recovery. Aliquot to avoid repeated freeze-thaw cycles. Store aliquots at 4°C for 1-2 weeks.		

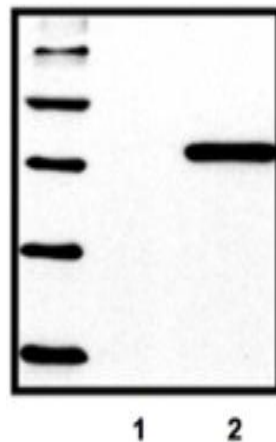




LEFT: untransfected control; RIGHT: anti-His (in red) on His-tagged fusion proteins in HEK293 cells. Both counterstained with DAPI (in blue)



Comparison between anti-His tag (HIS.H8 / EH158) mAb with 2 different vendor Abs, probed against a standard ladder (Qiagen Cat. No. 34705) containing five different His-tagged proteins. All Ab dilutions are 1:2,000 (0.5 µg/mL)



Standard ladder containing five different His-tagged proteins; untransfected control (1), HEK293 cells transfected with His-tagged protein vector (2)

NOT FOR HUMAN USE. FOR RESEARCH ONLY. NOT FOR DIAGNOSTIC OR THERAPEUTIC USE.