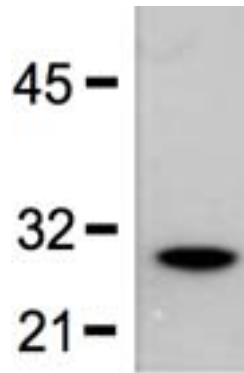


Mouse Anti-GST Tag Clone GST.B6/G2R mAb

| | | | |
|---------------------------------|---|------------------|---------------------------|
| Catalog No. | CSI20565A CSI20565B CSI20565C | Quantity: | 50 µg 100 µg 1.0 µg |
| Description: | Mouse Anti-GST Tag Clone GST.B6/G2R mAb | | |
| Concentration: | 1.0 mg/ml | | |
| Specificity: | Recognizes native and denatured forms of purified GST or GST fusion proteins | | |
| Host: | Mouse | | |
| Immunogen: | GST protein | | |
| Isotype: | IgG2a | | |
| Clone: | GST.B6/G2R | | |
| Formulation: | Liquid in 10 mM PBS, pH 7.2. | | |
| Purification: | Protein A affinity chromatography from mouse ascites fluid | | |
| Applications: | Dot Blot ELISA Immunoprecipitation Immunostaining Western Blot | | |
| Application Notes: | Western blot sensitivity(with ECL): 10-50 ng of GST or GST fusion proteins Wesern Blot (with ECL): working dilution of 1:1,000-3,000 (incubate for one hour at room temperature). Immunostaining: working dilution of 1:500-2,000. The optimal concentration should be determined by the user for each specific application. | | |
| Storage & Stability: | Store at 2-4°C (add 0.1% NaN ₃) for several days to weeks, and at -20°C for longer periods. Avoid repeated freeze-thaw cycles. | | |



1:5,000 (0.2 µg/mL) Ab dilution probed against BL-21 bacteria lysate expressing the GST protein



NOT FOR HUMAN USE. FOR RESEARCH ONLY. NOT FOR DIAGNOSTIC OR THERAPEUTIC USE.