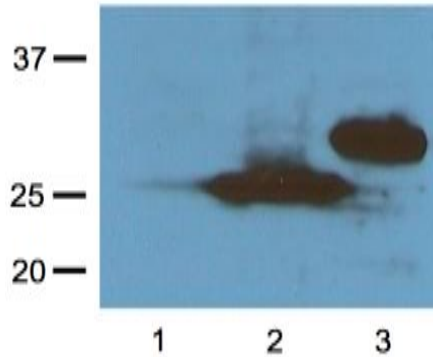


Mouse Anti-RFP Tag (Clone RF5R) mAb

Catalog No.	CSI20570A CSI20570B CSI20570C	Quantity:	50 µg 100 µg 200 µg
Description:	Mouse Anti-RFP (Red Fluorescent Protein) Tag Clone RF5R mAb		
Concentration:	1.0 mg/mL		
UniProt ID:	Q9U6Y8		
Specificity:	Recognizes native and denatured forms of RFP and its variants: Tag-RFP, Turbo-RFP, dsRed, mCherry, mOrange, tdTomato, etc.		
Host:	Mouse		
Immunogen:	N-terminal peptide from <i>Discosoma sp.</i> (sea anemone) Red Fluorescent Protein, peptide conjugated to KLH (Keyhole Limpet Hemocyanin).		
Isotype:	IgG1		
Clone:	RF5R		
Conjugate:	Unconjugated		
Formulation:	Liquid in 10 mM PBS, pH 7.2 with 0.05% sodium azide		
Purification:	Protein A affinity chromatography from mouse ascites fluid		
Applications:	Western Blot, Immunoprecipitation, Immunostaining, Dot Blot, ELISA,		
Application Notes:	Western blot sensitivity (with ECL): 1-10 ng of purified RFP or RFP fusion proteins. Recommended working dilutions: Western Blot (with ECL): 1:1,000-3,000 (incubate for one hour at room temperature). Immunoprecipitation: 1:50-200. Immunostaining: 1:500-2,000. The optimal concentration should be determined by the user for each specific application.		
Storage & Stability:	Store at 2-8°C for up to two weeks, or in working aliquots at -20°C to -80°C for up to one year. Avoid repeated freeze-thaw cycles.		
Statement:	PPE is recommended when working with products containing sodium azide.		

1:1,000 (1 µg/mL) Ab dilution probed against HEK293 cells transfected with RFP vector: untransfected control (1), transfected with TurboRFP (2), and transfected with dsRed (3).



NOT FOR HUMAN USE. FOR RESEARCH ONLY. NOT FOR DIAGNOSTIC OR THERAPEUTIC USE.



Cell Sciences®
65 Parker Street
Unit 11
Newburyport, MA 01950

Toll Free: 888-769-1246
Phone: 978-572-1070
Fax: 978-992-0298

E-mail: info@cellsciences.com
Website: www.cellsciences.com