

MAPK3

Mouse Anti-ERK1 Clone E32 Signal Transduction mAb

| | | | |
|--------------------|-----------|------------------|--------|
| Catalog No. | CSI20573A | Quantity: | 50 µg |
| | CSI20573B | | 100 µg |
| | CSI20573C | | 200 µg |

Description: Mouse Anti-ERK1 Clone E32 mAb Signal Transduction

Concentration: 1.0 mg/ml

Gene ID: 5595

Specificity: Recognizes only the ERK1 protein (e.g.: from human and mouse cells)

Host: Mouse

Immunogen: Recombinant full length ERK1 protein

Isotype: IgG1

Clone: E32

Formulation: Liquid in 10 mM PBS, pH 7.2.

Purification: Protein A affinity chromatography from mouse ascites fluid

Applications: Immunoprecipitation
Western Blot

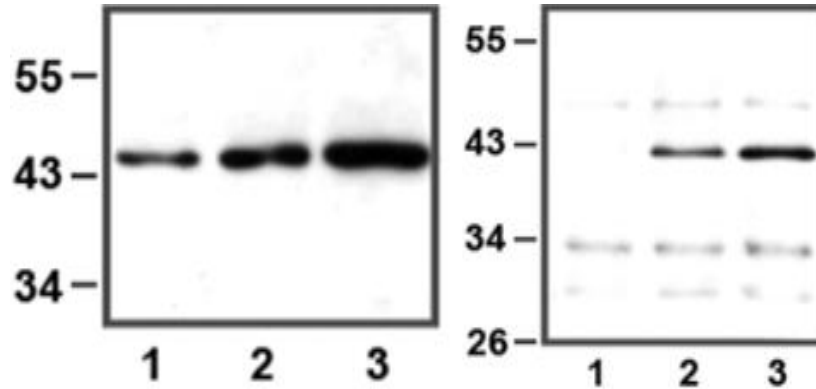
Application Notes: Wesern Blot (with ECL): working dilution of 1:1,000-10,000 (incubate for one hour at room temperature).
The optimal concentration should be determined by the user for each specific application.



Storage & Stability: Store at 2-4°C (add 0.1% NaN₃) for several days to weeks, and at -20°C for longer periods. **Avoid repeated freeze-thaw cycles.**

1:1,000 (1 µg/mL) Ab dilution used in WB of HEK293 cell lysate; 5 µg (1), 10 µg (2), and 30 µg (3) of cell lysate used;

RIGHT: IP of anti-ERK1 (1 µL) using HeLa cell lysate; 10 µg (1), 25 µg (2), and 50 µg (3) of cell lysate used



NOT FOR HUMAN USE. FOR RESEARCH ONLY. NOT FOR DIAGNOSTIC OR THERAPEUTIC USE.