

## Mouse Anti-Apolipoprotein A1 Clone G2 mAb

**Catalog No.** MON8131                      **Quantity:** 500 µg

**Specificity:** This antibody Apolipoprotein A1 (Apo-A1), a lipid-binding protein which enables the transport of dietary lipids for storage, metabolism and secretion. Apo-A1 plays an important role in the removal of cholesterol from cells.

**Host:** Mouse

**Immunogen:** Native Apo-A1 from human plasma.

**Isotype:** IgG1

**Clone:** G2

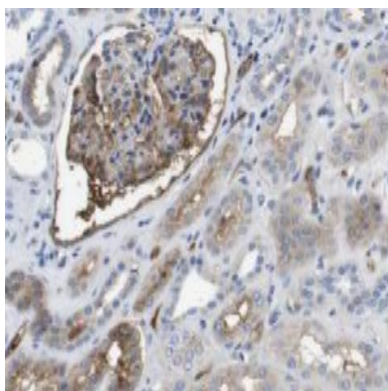
**Formulation:** 0.5 mg purified IgG lyophilized

**Purification:** Affinity chromatography on Protein A

**Cross-Reactivity:** No cross reactivity with ApoE, ApoB or Albumin.s with ApoE, ApoB or Albumin.

**Applications:** This antibody can be used in immunohistochemistry (1:20 - 1:80), ELISA and Western Blot (1:2000 - 1:8000).

**Storage & Stability:** Store at 2-8°C, for extended storage aliquot and store at -20°C



NOT FOR HUMAN USE. FOR RESEARCH ONLY. NOT FOR DIAGNOSTIC OR THERAPEUTIC USE.