

Rabbit Anti-Conjugated Serotonin pAb

Catalog No. PA2012 **Quantity:** 100 µl

Description: Polyclonal antisera were raised in rabbits after immunization with the conjugates: 5-Hydroxytryptamine-Glutaraldehyde-Carriers

Purity: Antiserum previously preabsorbed on protein carriers, and purified

Form: Lyophilized

Host: Rabbit

Immunogen: Synthetic 5-Hydroxytryptamine conjugated to protein carrier (Pc)

Target: Conjugated 5-Hydroxytryptamine

Isotype: IgG

Specificity: Using a conjugate 5-Hydroxytryptamine-(Pc), antibody specificity was performed with an ELISA test by competition experiments with the following compounds :

Compounds	Cross-reactivity ratio (a)
Serotonin-G-(Pc)	1
5-Methoxytryptamine-G-(Pc)	1/25
Tryptamine-G-(Pc)	1/50
5-Hydroxytryptophan-G-(Pc)	1/175
L-Tryptophan-G-(Pc)	1/3,500
5-Methoxytryptophan-G-(Pc)	1/20,000
free Serotonin	1/1,15

(a) : 5-Hydroxytryptamine-G-(Pc) concentration / Other c conjugated indolealkylamines concentration at half displacement ; G = Glutaraldehyde

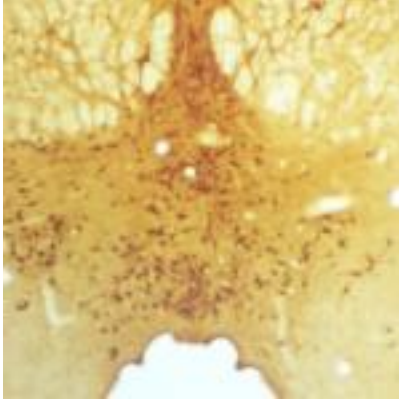
Applications: Immunocytochemistry, Immunohistochemistry. Optimal dilutions should be determined by each laboratory for each application.

Storage & Stability: Lyophilized vial must be stored at 4°C in a dry area. After reconstitution with 50µl of distilled water and 50µl of glycerol, the aliquot can be stored at -20°C, and is stable at least 2 years.

Research Areas: Neurobiology, Biochemistry, Pharmacology, Neurodegenerative diseases



Serotonin immunoreactive cells in the rat raphe (general view) visualized with Polyclonal anti-conjugated Serotonin (5-Hydroxytryptamine) antibodies



Serotonin immunoreactive cells in the rat raphe (Higher magnification) visualized with Polyclonal anti-conjugated Serotonin (5-Hydroxytryptamine) antibodies



NOT FOR HUMAN USE. FOR RESEARCH ONLY. NOT FOR DIAGNOSTIC OR THERAPEUTIC USE.



Cell Sciences®
480 Neponset Street
Bldg 12A
Canton, MA 02021

Toll Free: 888-769-1246
Phone: 781-828-0610
Fax: 781-828-0542

E-mail: info@cellsciences.com
Website: www.cellsciences.com