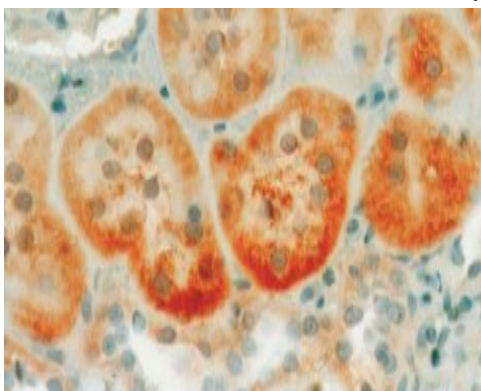


## IGFBP1

### Rabbit Anti-Human IGFBP-1 pAb

<b>Catalog No.</b>	PAAH1	<b>Quantity:</b>	200 µg
<b>Alternate Names:</b>	IGF-binding protein 1, IBP-1, Placental protein 12, PP12		
<b>Description:</b>	This IGFBP-1 antibody was prepared by immunizing rabbits with a 12 amino acid peptide derived from the central domain of human IGFBP-1 linked to diphtheria toxoid. The peptide sequence is located immediately upstream of the thyroglobulin type-1 domain and is unique to IGFBP-1.		
<b>UniProt ID:</b>	P08833		
<b>Specificity:</b>	Recognizes human, rat and mouse IGFBP-1 (phosphorylated and non-phosphorylated forms). Sequence analysis suggests that this antibody should also be specific for IGFBP-1 in non-human primates and may also work in other species, although this should be determined experimentally.		
<b>Host:</b>	Rabbit		
<b>Immunogen:</b>	Derived from UniProt ID P08833 Human IGFBP-1, peptide sequence 161-172 amino acids (IGFBP-1 <sub>136-147</sub> ) conjugated to diphtheria toxoid.		
<b>Purification:</b>	Protein A affinity chromatography. Lyophilized.		
<b>Reconstitution:</b>	<b>Centrifuge vial prior to opening.</b> Dissolve in 200 µl sterile water. Dilute further in a buffer solution appropriate for the desired application.		
<b>Cross-Reactivity:</b>	No cross reactivity with human IGFBP-2, 3, 4, 5, or 6.		
<b>Applications:</b>	ELISA, IHC, Western Blot		
<b>Application Notes:</b>	.As a guideline the antibody can be used at a dilution of 1:250 - 1:10,000. The optimal concentration should be determined by the user for each specific application.		
<b>Storage &amp; Stability:</b>	Store as supplied for up to 2 years at 2 - 8°C. After reconstitution, aliquot and store at -20°C or -80°C. <b>Avoid repeated freeze-thaw cycles.</b>		

IHC localization of IGFBP-1 in rat kidney



NOT FOR HUMAN USE. FOR RESEARCH ONLY. NOT FOR DIAGNOSTIC OR THERAPEUTIC USE.