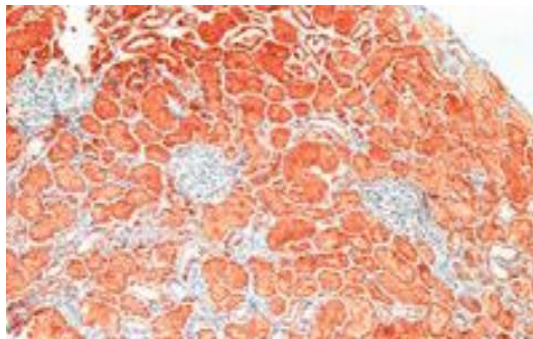


IGFBP2

Rabbit Anti-Human IGFBP-2 pAb

Catalog No.	PAAI1	Quantity:	200 µg
Alternate Names:	Insulin-like growth factor binding protein 2, IBP-2, IGF-binding protein 2		
Description:	This IGFBP-2 antibody was prepared by immunizing rabbits with a 15 amino acid peptide derived from the C-terminal domain of human IGFBP-2 linked to diphtheria toxoid. The peptide sequence is located upstream of the C-terminus and is unique to IGFBP-2		
UniProt ID:	P18065		
Host:	Rabbit		
Isotype:	IgG		
Specificity:	Recognises human and rat IGFBP-2. Through sequence analysis this antibody may recognize IGFBP-2 from additional species, although this should be determined experimentally.		
Cross-Reactivity:	No cross-reactivity against IGFBP-1, 3, 4, 5 or 6, or related proteins.		
Immunogen:	Derived from UniProtKB sequence ID P18065 Human IGFBP-2. The peptide sequence is amino acids 306-320, IGFBP-2 ₂₇₀₋₂₈₄ conjugated to diphtheria toxoid.		
Purification:	Protein A affinity chromatography. Lyophilized.		
Reconstitution:	Centrifuge vial prior to opening. Reconstitute in 200 µl of sterile water. Dilute further in a buffer solution appropriate for the desired application.		
Applications:	ELISA, Western Blot, IHC.		
Application Notes:	The recommended range for use is 1:250 – 1:10,000. This should be optimized by the user.		
Storage & Stability:	Store as supplied for up to 2 years at 2 - 8°C. After reconstitution, aliquot and store at -20°C or -80°C. Avoid repeated freeze-thaw cycles.		



NOT FOR HUMAN USE. FOR RESEARCH ONLY. NOT FOR DIAGNOSTIC OR THERAPEUTIC USE.

