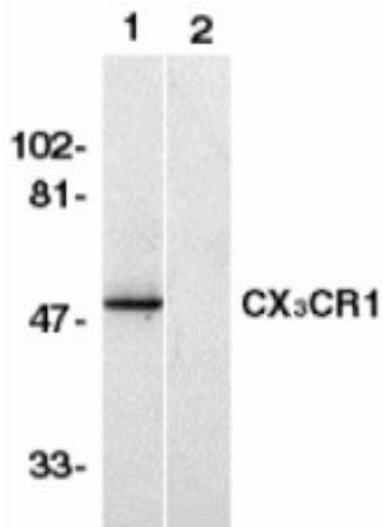


Cxcr1

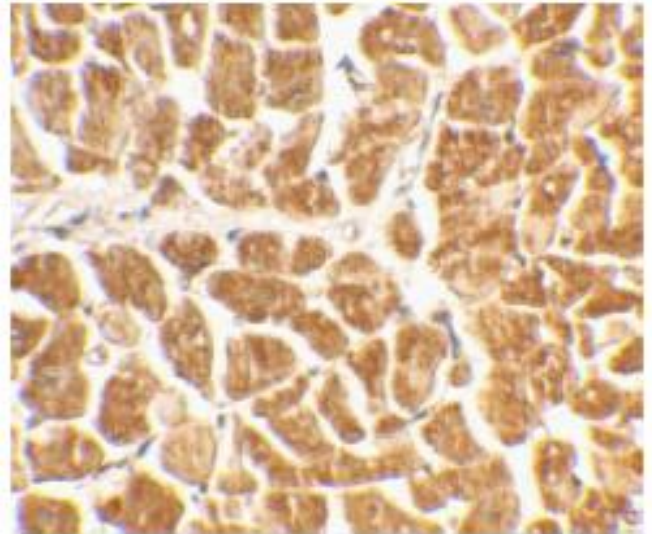
Rabbit Anti-Human, Mouse, Rat CX3CR1, Affinity Purified pAb

Catalog No.	PX168A PX168B	Quantity:	100 µg 0.5 mg
Alternate Names:	Fractalkine receptor, CCRL1, CMKBLR1, CMKDR1, GPR13, GPRV28, RBS11, V28		
Description:	Rabbit Anti- CX3CR1 Affinity Purified polyclonal antibody. CX3CR1 is one of the chemokine receptors that are required as co-receptors for HIV infection. The genes encoding human, mouse, and rat CX3CR1 were cloned and designated V28 and CMKBRL1, CX3CR1, and RBS11, respectively. The encoded seven transmembrane protein was recently identified as the receptor for a novel transmembrane molecule, fractalkine, and renamed CX3CR1. Recently, CX3CR1 was found to serve as a coreceptor for HIV-1 and HIV-2 envelope fusion and virus infection, which can be inhibited by fractalkine. CX3CR1 mediates leukocyte migration and adhesion and is expressed in a variety of human tissues and cell lines.		
UniProt ID:	P49238		
Gene ID:	1524		
Immunogen:	20 amino acid peptide near the amino terminus of human CX3CR1. The immunogen is located within the first 50 amino acids of CX3CR1. The sequence differs from mouse and rat CX3CR1 by four amino acids.		
Host:	Rabbit		
Specificity:	Human, mouse, rat CXCR1		
Molecular Weight:	50 kDa, predicted 52 kDa, observed		
Concentration:	1 mg/ml		
Isotype:	IgG		
Formulation:	PBS containing 0.02% sodium azide. Precaution: Sodium azide is a poisonous and hazardous substance which should be handled by trained staff only.		
Purification:	Biospecific affinity chromatography		
Application Notes:	<p>Western Blot: use at 0.5 - 1 µg/mL Human spleen tissue lysate can be used as positive control and an approximately 50 kDa band can be detected.</p> <p>Flow Cytometry: use at 0.1 µg/ml</p> <p>IHC-P: use at 2 µg/ml</p> <p>IF: use at 10 µg/ml</p> <p>The optimal concentration should be determined by the user for each specific application.</p>		
Storage & Stability:	Store at 2-8°C for up to 3 months. Prepare working aliquots and store at -20°C to -80°C for up to 1 year. Avoid repeated freeze/thaw cycles.		

Western Blot of CX3CR1 in human spleen lysate with CX3CR1 antibody in the absence (Lane 1) or presence of blocking peptide (Lane 2).



Immunohistochemical staining of human heart tissue using CX3CR1 antibody at 2 µg/ml.



NOT FOR HUMAN USE. FOR RESEARCH ONLY. NOT FOR DIAGNOSTIC OR THERAPEUTIC USE.



Cell Sciences®
65 Parker Street
Unit 11
Newburyport, MA 01950

Toll Free: 888-769-1246
Phone: 978-572-1070
Fax: 978-992-0298

E-mail: info@cellsciences.com
Website: www.cellsciences.com